

RICOH
imagine. change.

B&W Multi Function Printer

RICOH
IM 2500
IM 3000
IM 3500
IM 4000
IM 5000
IM 6000

Copier Printer Facsimile Scanner



RICOH
IM 2500

25 Monochrome
ppm

RICOH
IM 3000

30 Monochrome
ppm

RICOH
IM 3500

35 Monochrome
ppm

RICOH
IM 4000

40 Monochrome
ppm

RICOH
IM 5000

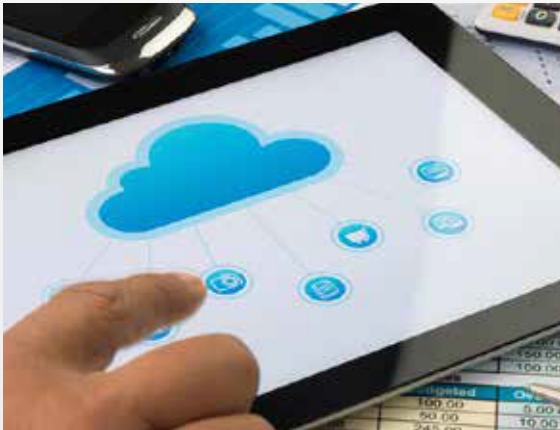
50 Monochrome
ppm

RICOH
IM 6000

60 Monochrome
ppm

Convert to cloud

Manage your documents with ease and access professional printouts inhouse on demand



Digital document storage has never been easier

They say once you go digital, you'll never go back to the paper trail. At Ricoh, we've made it so easy to convert paper-based information to digital format for fast and convenient digital storage. Simply scan documents directly to cloud storage services such as Dropbox™ or SharePoint™ or to folders on your corporate network. We're adding on new "scan to" destinations all the time. And if you are concerned about security of your documents in the cloud, rest assured that our multi-layered security features make digital document management risk proof.

Bringing on new technologies? No problem

Ricoh's Always Current Technology allows you to add and connect to new software solutions, applications and cloud services as you bring them onboard to optimise your document management workflows. Now your people can work smarter, faster and more securely than ever knowing that upgrades can simply be downloaded and installed to any device they use so their tools are always current.



A suite of options for a professional print finish

You can forget outsourcing to professional printers when you've got this workhorse printer inhouse. Print professional-looking booklets and magazines with our booklet finisher feature. Choose from punch or staple finishes or opt for staple-free binding with our hybrid finisher. The multi-folding unit takes the manual work out of folding leaflets and, with a choice of paper options and additional paper capacity, you won't need to refill the paper trays as often.

RICOH IM 2500 / IM 3000 / IM 3500 / IM 4000 / IM 5000 / IM 6000

MAIN SPECIFICATIONS

MODEL	RICOH IM 2500	RICOH IM 3000	RICOH IM 3500	RICOH IM 4000	RICOH IM 5000	RICOH IM 6000
GENERAL						
Warm-up time	18 seconds	17.7 seconds	18.6 seconds	17.9 seconds	19.1 seconds	18.8 seconds
First output speed: B/W	4.1 seconds	3.9 seconds	3.8 seconds	3.6 seconds	2.7 seconds	2.3 seconds
Continuous output speed	25 ppm	30 ppm	35 ppm	40 ppm	50 ppm	60 ppm
Memory: standard	2 GB					
HDD: maximum	320 GB					
ARDF capacity	100 sheets					
SPDF capacity	220 sheets					
Weight	with ARDF: 71 kg with SPDF: 76.5 kg					
Dimensions (W x D x H)	with ARDF: 587 x 673 x 913 mm with SPDF: 587 x 673 x 963 mm					
Power source	220 - 240 V, 50 - 60 Hz					
COPIER						
Multiple copying	Up to 999 copies					
Resolution	600 dpi					
Zoom	From 25% to 400% in 1% steps					
PRINTER						
CPU	Intel [®] Atom Processor ApolloLake-I 1.36 GHz					
Printer language: standard	PCL5c, PCL6, PostScript 3 (emulation), PDF direct (emulation)					
Printer language: option	Genuine Adobe [®] PostScript [®] 3 [™] , IPDS, PDF Direct from Adobe [®]					
Print resolution: maximum	Up to 1,200 x 1,200 dpi					
Network interface: standard	Ethernet 10 base-T/100 base-TX/1000 base-T, USB Host I/F Type A, USB Device I/F Type B					
Network interface: option	Bi-directional IEEE 1284, Wireless LAN (IEEE 802.11a/b/g/n), Additional NIC (2nd port)					
Mobile printing capability	Apple AirPrint [™] , Mopria [™] , NFC, RICOH Smart Device Connector					
Windows [®] environments	Windows [®] 8.1, Windows [®] 10, Windows [®] Server 2012, Windows [®] Server 2012R2, Windows [®] Server 2016, Windows [®] Server 2019					
Mac OS environments	Macintosh OS X v10.13 or later					
UNIX environments	UNIX Sun [®] Solaris, HP-UX, SCO OpenServer, RedHat [®] Linux, IBM [®] AIX, Citrix XenApp (7.6 LTSR, 7.15 LTSR, VirtualApps/Desktops 71912 LTSR and later)					
SAP [®] environments	SAP [®] R/3 [®] , SAP [®] S/4 [®]					
Other supported environments	NDPS Gateway AS/400 [®] using OS/400 Host Print Transform					
SCANNER						
Scanning speed: ARDF	80 ipm (200/300 dpi)					
Scanning speed: SPDF	Simplex: 120 ipm (200 dpi), 110 ipm (300 dpi) Duplex: 240 ipm (200 dpi), 180 ipm (300 dpi)					
Resolution: maximum	Up to 600 dpi					
File formats	Single Page TIFF (Compression on, Compression off), Single page JPEG, Single page PDF, Single page High compression PDF, Single page PDF/A, Multi page TIFF, Multi page PDF, Multi page High compression PDF, Multi page PDF/A					
Scan modes	E-mail, USB, SD Card, URL, FTP, SMB					
FACSIMILE						
Circuit	PSTN, PBX					
Transmission speed	2 seconds					
Modem speed: maximum	33.6 Kbps					
Resolution: standard	8 x 3.85 line/mm, 200 x 100 dpi 8 x 7.7 line/mm, 200 x 200 dpi					
Resolution: option	16 x 15.4 line/mm, 400 x 400 dpi					
Compression method	MH, MR, MMR, JBIG					
Memory: standard	4 MB (320 pages)					
Memory: maximum	60 MB (4,800 pages)					
PAPER HANDLING						
Recommended paper size	Tray 1: A3, A4, A5, A6, B4, B5, B6, Envelopes Tray 2: A3, A4, A5, A6, B4, B5, B6, Envelopes Bypass tray: A3, A4, A5, A6, B4, B5, B6, Envelopes, Custom Size paper					
Paper input: standard	1,200 sheets					
Paper input: maximum	4,700 sheets					
Paper output: standard	500 sheets					

MODEL	RICOH IM 2500	RICOH IM 3000	RICOH IM 3500	RICOH IM 4000	RICOH IM 5000	RICOH IM 6000
Paper output: maximum	1,625 sheets			3,625 sheets		
Paper weight	Trays: 60 - 300 g/m ² , Bypass: 52 - 300 g/m ² , Duplex: 52 - 256 g/m ²					
Paper types	Plain paper, Recycle paper, Special paper, Color paper, Letterhead, Cardstock, Preprinted paper, Bond paper, Coated paper, Envelope, Label paper, OHP					
ECOLOGY						
Power consumption: maximum	1,600W			1,780W		
Power consumption: operation	446W	475W	553W	568W	767W	821W
Power consumption: ready	56.4W			64.7W		
Power consumption: sleep	0.57W					
TEC*	0.29 kWh/week	0.35 kWh/week	0.41 kWh/week	0.47 kWh/week	0.63 kWh/week	0.74 kWh/week
*It is a reference value based on the ENERGY STAR Ver.3.0 test method.						
OUTPUT TRAYS AND FINISHER OPTIONS						
1x 550-sheet Paper tray	Paper size: A3, A4, A5, A6, B4, B5, B6, Paper weight: 60-300 g/m ²					
2x 550-sheet Paper tray (PB3280)	Paper size: A3, A4, A5, A6, B4, B5, B6, Paper weight: 60-300 g/m ²					
2,000-sheet Large capacity tray (LCIT PB3290)	Paper size: A4, 8.5"x11", Paper weight: 60-300 g/m ²					
1,500-sheet Side large capacity tray (LCIT RT3040)	Paper size: A4, B5, Paper weight: 60-300 g/m ²					
1,000-sheet Hybrid finisher (SR3260)	Paper size: A3, A4, A5, A6, B4, B5, B6, Paper weight: 52-300 g/m ² , Stack capacity: 1,000 sheets, Staple capacity: 50 sheets, Staple paper size: A3, A4, B4, B5, Staple paper weight: 52-105 g/m ² , Staple positions: Top, Bottom, 2 staples					
3,000-sheet Finisher (SR3280)	Paper size: A3, A4, A5, A6, B3, B4, B5, B6, Paper weight: 52-300 g/m ² , Stack capacity: 3,000 sheets, Staple capacity: 50 sheets, Staple paper size: A3, A4, B4, B5, Staple paper weight: 52-105 g/m ² , Staple positions: Top, Bottom, 2 staples, Top Slant					
1,000-sheet Booklet finisher (SR3270)	Paper size: A3, A4, A5, A6, B4, B5, B6, Paper weight: 52-300 g/m ² , Stack capacity: 1,000 sheets, Staple capacity: 50 sheets, Staple paper size: A3, A4, B4, B5, Staple paper weight: 52-105 g/m ² , Staple positions: Top, Bottom, 2 staples, Booklet					
2,000-sheet Booklet finisher (SR3290)	Paper size: A3, A4, A5, A6, B3, B4, B5, B6, Paper weight: 52-300 g/m ² , Stack capacity: 2,000 sheets, Staple capacity: 50 sheets, Staple paper size: A3, A4, B4, B5, Staple paper weight: 52-105 g/m ² , Staple positions: Top, Bottom, 2 staples, Booklet					
250-sheet Internal finisher (SR3300)	Paper size: A3, A4, A5, A6, B4, B5, Paper weight: 52-300 g/m ² , Stack capacity: 250 sheets, Staple capacity: 5 sheets, Staple paper size: A3, A4, B4, B5, Staple paper weight: 64-80 g/m ² , Staple positions: Top					
500-sheet Internal finisher (SR3250)	Paper size: A3, A4, A5, A6, B4, B5, Paper weight: 52-300 g/m ² , Stack capacity: 500 sheets, Staple capacity: 50 sheets, Staple paper size: A3, A4, B4, B5, Staple paper weight: 52-105 g/m ² , Staple positions: Top, Bottom, 2 staples					
Internal shift tray (SH3080)	Tray capacity: 250 sheets (A4/Letter), Paper size: SRA3, A3, A4, A5, A6, B4, B5, B6, Paper weight: 52-300 g/m ²					
One-bin tray (BN3130)	Tray capacity: 125 sheets, Paper size: A3, A4, A5, B3, B4, Paper weight: 52-300 g/m ²					
OTHER OPTIONS						
PostScript3 Unit Type M45, IPDS Unit Type M45, XPS Direct Print Option Type M45, Fax Option Type M45, G3 Interface Unit Type M45, Fax Connection Unit Type M45, NFC Card Reader Type M45, Smart Card Reader Built-in Unit Type M45, Platen Cover PN2000, Marker Type 30, Small Paper Feeding Unit Type M37, Page Keeper Type M37, Caster Table Type M3, Side Tray Type M37, Bridge Unit BU3090, Punch Unit PU3080 NA, Punch Unit PU3080 EU, Punch Unit PU3080 SC, Punch Unit PU3070 NA, Punch Unit PU3070 EU, Punch Unit PU3070 SC, Internal Multi-Fold Unit FD3010, ADF Handle TypeC, Device Server Option Type M37, Unicode Font Package for SAP * 1 License, Unicode Font Package for SAP * 10 License, IEEE 802.11a/g/n Interface Unit Type M19, IEEE 1284 Interface Board Type M19, File Format Converter Type M19, FAX Memory Unit Type M19 64MB, OCR Unit Type M13, Optional Counter Interface Unit Type M12, Key Counter Bracket Type M3, External Keyboard Bracket Type M19, DataOverwriteSecurity Unit Type M19, Punch Unit PU3090 NA, Punch Unit PU3090 EU, Punch Unit PU3090 SC						

RICOH
imagine. change.

www.ricoh.com.ph

RICOH (PHILIPPINES), INC.

G/F OPPEN Building, 349 Sen. Gil J. Puyat Avenue, Makati City, Philippines 1200
Landline: [Makati] (02) 865-9500, [Laguna] (049) 502-7242, [Cebu] (032) 256-4559

 Ricoh Philippines, Inc.

 Ricoh Philippines

 ricohphils

 Ricoh Philippines